



Introducing our new INTERACTIVE line card!

Product Types

- | | | | |
|--|--|---|---|
| <input type="checkbox"/> Architectural Materials | <input type="checkbox"/> Area & Post Top | <input type="checkbox"/> Bollard & Column | <input type="checkbox"/> Building & Facade |
| <input type="checkbox"/> Ceiling | <input type="checkbox"/> Controls | <input type="checkbox"/> Cove | <input type="checkbox"/> Custom |
| <input type="checkbox"/> Cylinder | <input type="checkbox"/> Downlight | <input type="checkbox"/> Emergency | <input type="checkbox"/> Floodlight |
| <input type="checkbox"/> Garage & Canopy | <input type="checkbox"/> Harsh Environments | <input type="checkbox"/> Highbay | <input type="checkbox"/> Industrial & Strip |
| <input type="checkbox"/> In-Grade | <input type="checkbox"/> Landscape | <input type="checkbox"/> LED Lamps | <input type="checkbox"/> Linear Recessed |
| <input type="checkbox"/> Linear Suspended | <input type="checkbox"/> Linear Wall/Surface | <input type="checkbox"/> Medical | <input type="checkbox"/> Pendant |
| <input type="checkbox"/> Poles | <input type="checkbox"/> Power & Wiring | <input type="checkbox"/> Quick Ship | <input type="checkbox"/> Retrofit Kit |
| <input type="checkbox"/> Rings | <input type="checkbox"/> RLM Shades | <input type="checkbox"/> Roadway | <input type="checkbox"/> Signage |
| <input type="checkbox"/> Solar & Daylighting | <input type="checkbox"/> Specialty | <input type="checkbox"/> Sports Lighting | <input type="checkbox"/> Step & Marker Lights |
| <input type="checkbox"/> Tape & Rope | <input type="checkbox"/> Theatrical | <input type="checkbox"/> Track | <input type="checkbox"/> Troffer & Wrap |
| <input type="checkbox"/> Under Cabinet & Task | <input type="checkbox"/> Vanity & Mirrors | <input type="checkbox"/> Wall Pack | <input type="checkbox"/> Wall Sconce |

You can now **search by product type** for your specific application. Each item is clickable and will direct you to photos and product descriptions.

Looking for downlights? Who carries linear suspended? Click on a box and it automatically brings up all our manufacturers who have those products!

Very cool! [Click here](#) to check it out now!

We'd love your [feedback](#)!



Try this under cabinet light with a low profile design

The **Noble Pro LED** under cabinet light from AFX has a great low profile design. Its features include:

- Linkable up to 200 watts
- Features a selectable switch allowing selection of 1 of 3 color levels, 2700K, 3000K & 4000K CCT
- Rated to 50,000 hrs. 90 CRI
- Dimmable using a standard 2-wire Triac wall dimmer
- Can be direct wired

[Optional Finishes:](#) Brushed Aluminum, Oil-Rubbed Bronze and White
[Optional Lengths and Lamping:](#) 9" & 4.6W, 14" & 6.7W, 22" & 10.7W, 32" & 14.4W, and 40" & 18W



In This Issue

- [Slick Undercabinet Lighting](#)
- [High Bay Comm & Retail Lighting](#)
- [Modular Fiberglass Enclosure](#)
- [Round High Output Downlights](#)
- [Grow Fixture](#)
- [Thin Profile LED Luminaire](#)
- [Changing the Wireless World](#)
- [Trimless Square Downlight](#)
- [Decolights Add Ambiance](#)
- [Landscape Architectural Lighting](#)
- [Yes, These Too!](#)
- [GE QUICK SHIP!](#)
- [Line Cards](#)



Prim, the top-performing trimless square line



New trimless square Prim is clean, sleek and smooth in both design and performance.

Surface & Pendant mounted FIVE Hi

'Hitting the ceiling' isn't such a bad thing with our **growing line** of surface and pendant mounted luminaires.

Our *new* surface mounted [FIVE Hi SM](#) and pendant mounted [FIVE Hi](#)

[PM](#) uniquely pack **high-output performance** and **flexible functions** into an **elegant cylinder**.





Augusta High Bay

This beautifully designed fixture is ideal for commercial and retail lighting. The die-cast aluminum housing is available in stylish colors making it an attractive alternative for the old fashioned high bays. For those wanting a pulse-start metal halide or CFL light source, the Augusta Image provides great horizontal and vertical lighting uniformity, glare control and visual comfort. The Augusta Image fixtures are designed for easy installation and maintenance.



LED SUSPENDED FESTOON LIGHTING

Applications to enhance the ambiance of your space:

- Restaurants
- Amusement Parks
- Patios, Courtyards, Atriums
- Bridges
- Indoor Spaces



What's New at



THE MODULAR FIBERGLASS ENCLOSURE

The new families of modular enclosures are designed to provide the installer with simple design and execution; an experience that outshines others in the marketplace.

With 14 sizes available (seven solid door and seven window), the modular adjustable frame enables the installer to adjust din rail mounting components, modular panels and inner doors to desired heights,



simply using a quick quarter lock-in method, plug and play.

It is designed to allow easy removal of the entire back plate or din rail assembly from the enclosure, facilitating installation and maintenance.



Landscape Lighting

Vision3 Lighting manufactures the highest quality landscape and exterior architectural lighting products for the specification-grade lighting industry.

Check out the New [4W LED module](#) with integral driver and patented LEDSense® thermal management.



[Read More](#)



H85 (8.5")& H60 (6") Round High Output Downlight -LED

*Available up to 16,000 lumens

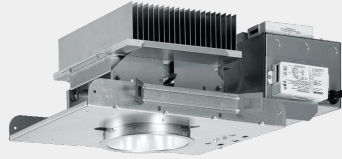
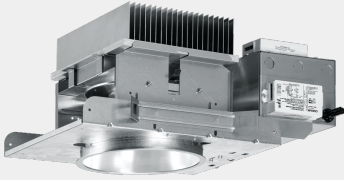
*Wide, medium, narrow and wall wash distributions to tailor performance to the application

Did you know we offer products from these great lines, too?



Starfire Lighting, Inc. provides architectural grade lighting solutions for the entire spectrum of commercial and residential applications,

*20' - 60' optimal mounting heights



offering the highest level of service to the

lighting specification community.



Committed to finding a better way...

At LUX dynamics, we design and

manufacture energy-efficient sustainable

lighting for high abuse environments



Mammoth-C500 Grow Fixture

A revolutionary new horticultural growing system. Utilizing mainly red and blue spectrum's of light supported by two tubes of UV light, the light emitted from this fixture is efficient.

Key Features:

- * Life Sync Smart Technology - Over temperature protection & lumen depreciation maintenance
- * Programmable Power & Timing Settings on board.
- * Offers industry-leading 50,000 hrs rated average life.
- * Low energy consumption with only 95W/Module.
- * Low running temperature cuts cost of air conditioning.
- * Supplemental UV tubes help mimic sunlight for a increased yields and quality of

crops

- * Soft start.
- * Made in the USA.
- * Red and Blue LEDs target specific wavelengths absorbed by chlorophyll in plants.

QUICKSHIP - LED Products from GE

[GE's New Quick Ship program provides 108 SKUs that ship 2-5 days after receipt of order.](#) This versatile offering of products provides industry best in class fixtures for all your major applications needs:

- commercial office troffers
- down lights
- industrial high bay
- hazardous location
- back of house
- garage
- outdoor area lighting

Made in the USA and providing unparalleled efficacy and unrivalled quality. GE offers you inventory flexibility allowing you to provide your customers the highest value for their money from a name they trust!



Have you wondered what "Current - powered by GE" is all about???

Click on the "Current" logo below to learn more about how GE is energizing the future!



Lumination™ LED Luminaire - LTL Series from GE

Features & Benefits

- *Thin profile
- *Uniform light distribution
- *Simple and quick installation
- *Easily installs into T-grid drop ceilings
- *New construction or retrofit
- *Standard dimming 0-10V
- *CCT: 3500K, 4000K and 5000K
- *Available in 2x2 and 2x4 models
- *Long life (50,000 hours @ L70)



[Read More](#)

Introducing Simple and Scalable Commercial Lighting Control with VIVE!

Introducing a revolutionary, modular wireless lighting control solution for new and

existing commercial buildings. We believe in making



existing commercial buildings. We believe in making every office, school, or university an efficient, comfortable and productive place to work or learn.

Vive wireless solutions
per se la S de target n l cal boot ruoy



Quick Links - Integrated Sales' Line Cards:

[IOWA Line Card](#)

[NEB/ WESTERN IA Line Card](#)

Lani Lonning
Sales Representative
Integrated Sales Inc.
llonning@int-sales.com



Contact Us:

Iowa Location

527 Main Street
P.O. Box 254
Van Meter, IA 50261

Phone: (515) 528-7463
Fax: (515) 864-0095

Nebraska Location

12044 Roberts Road
LaVista, NE 68128

Phone: (402) 289-9600
Fax: (402) 289-9700

E-Mails:

For More Information:
info@int-sales.com

For Orders:
orders@int-sales.com

Web site:
www.int-sales.com

[Click here for your Integrated Sales territory representative.](#)