

## Drive Your Business with Lutron

WIN a Ford F-150 XLT plus \$10,000 in cash, and bring Lutron to your next job in style.



Lutron is sponsoring the Drive Your Business with Lutron Sweepstakes to create demand with your contractors for Caséta Wireless and RadioRA 2 products, ultimately creating pull and moving inventory.

(Contractor eligibility with as little as \$100 in purchases!)

[Click here to learn more about this Promotion](#)



### In This Issue

- [Drive Your Customer to WIN!](#)
- [Top 3 Reasons to Switch to LED Tubes](#)
- [LSI Airlink technology](#)
- [Surface-mounted Wrap](#)
- [Low-Profile Industrial](#)
- [CIRC Pendant](#)
- [Interior LED Ribbon](#)
- [Tunable White LED](#)
- [Pole Pendants for Parks](#)
- [Other Great Partners!](#)
- [Line Cards](#)

## ISI Interactive Line Cards

Go to [www.int-sales.com](http://www.int-sales.com) for our interactive line card. Search by:

- product type
- manufacturer
- applications
- and more!



### TOP 3 REASONS TO SWITCH TO LED TUBES

LED lighting is on the rise for one very specific reason - It brings new levels of energy efficiency and longevity to warehouses, retail facilities, offices and other large commercial spaces worldwide.

While most people see the value in LED lighting technology, some have been hesitant to commit to installing new LED fixtures. It's true that LED fixtures deliver strong ROI over time, but decision makers can also find quick payback and quality illumination with easy-to-install LED retrofit solutions.

The facts about why building owners choose LED tubes?

- LEDs have 66% longer rated lifetimes than LFLs, meaning less disruptions & re-lamping costs
- LEDs require as much as 43-53% less energy to operate than LFLs
- LEDs offer better lighting quality with instant full brightness, warm and cool color temperatures, numerous lumen options, and higher CRI (80+)

Call us to learn more about how much you could save with LED tubes!



### Helix Series

24VDC Flexible, Interior Standard & High Output LED Interior Ribbon. 85+ CRI. The benchmark for Architectural grade LED Ribbon.



Helix Series  
85+ CRI

[Download our LED tubes brochure](#)



**LSI Airlink™ Controlled Lighting  
Luminaires with integrated Lutron Clear  
Connect™ Technology**

Integrated motion and light level sensors ensure maximum energy savings, quality and comfort, while wireless controls enable occupants to easily operate individual or groups of fixtures

AirLink™ boasts easy and fast installation, quick setup and can be used to meet stringent energy code requirements and support LEED certification.

[Click here to watch a short video](#)



**DAY-O-LITE**  
*Lighting Without Limits*

Day-O-Lite now offers a complete selections of [Tunable White LED](#) options available in al Day-O-Lite luminaires. Ideal for healthcare, educational, office and hospitality applications where human-centric performance and well-being is critical.

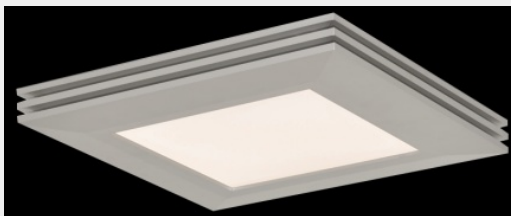


[Click here to learn more](#)



**Introducing  
SLOANE**

This low profile, clean appearance, surface mounted wrap provides a wide distributions of light. It can be used in various applications including offices, corridors, garages, kitchens and public spaces. White diffuser is made of engineered LED acrylic material. Housing is die-formed of 22-guage steel. 3000K color temperature. 50,000 hr. LED life, 90 CRI. cETLus listed for damp locations.



- Optional Finishes: Satin Nickel or white
- Optional Sizes/Wattages:
  - 15" square (18.5W)
  - 27" Linear (26W)
  - 50" Linear (39W)

[Click here to learn more](#)



This pendant offers refreshing lighting for pedestrian areas along riverfronts, embankments or in parks.

[Click here to learn more](#)

**Did you know we offer products  
from these great lines, too?**



Check out the new easy-to-install underlayment with [Warm-Wire Heat Matrix](#) - contractors love it!

contractors love it!



**Lighting Services Inc**

Dedicated to designing, engineering and manufacturing the highest quality track, accent, display and LED lighting systems.

**Quick Links - Integrated Sales' Line Cards:**

[IOWA Line Card](#)

[NEB/ WESTERN IA Line Card](#)

- Shallow fixture depth of less than 4"
- Narrow distribution and uplight options provide tailored performance
- Quick-wire access plate for easy installation



SLIMMER HOUSING



33% MORE LUMENS



QUICKSHIP AVAILABLE

esaelp ,rettelsven siht gnidrager snoitseup rOF

per se laS de targe tn l calatoot ruoy

f,0

[See the product](#)  
[Watch the video](#)



Lani R. Lonning  
Sales Representative  
Integrated Sales Inc.  
[llonning@int-sales.com](mailto:llonning@int-sales.com)



### CIRC Pendant

- LEDs with 50,000 hours rated lamp life at 70% lumen maintenance.
- 5000K Cool White is standard color temperature
- High-efficiency drive with short curcuit, over voltage and over temperature protection

Available in:

WW - Warm White (3000K)

NW - Neutral White (4000K)

CW - Cool White (5000K)



[Click here to learn more](#)

#### Iowa Location

527 Main St  
PO Box 254  
Van Meter, IA 50261

#### Nebraska Location

12044 Roberts Rd  
LaVista, NE 68128  
P: (402) 289-9600

#### General Information

Information: [info@int-sales.com](mailto:info@int-sales.com)  
Orders: [orders@int-sales.com](mailto:orders@int-sales.com)

**[Click here for your territory Representative](#)**